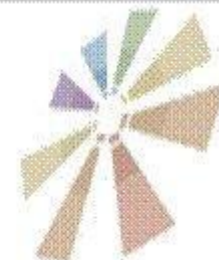




LINK
DEVON

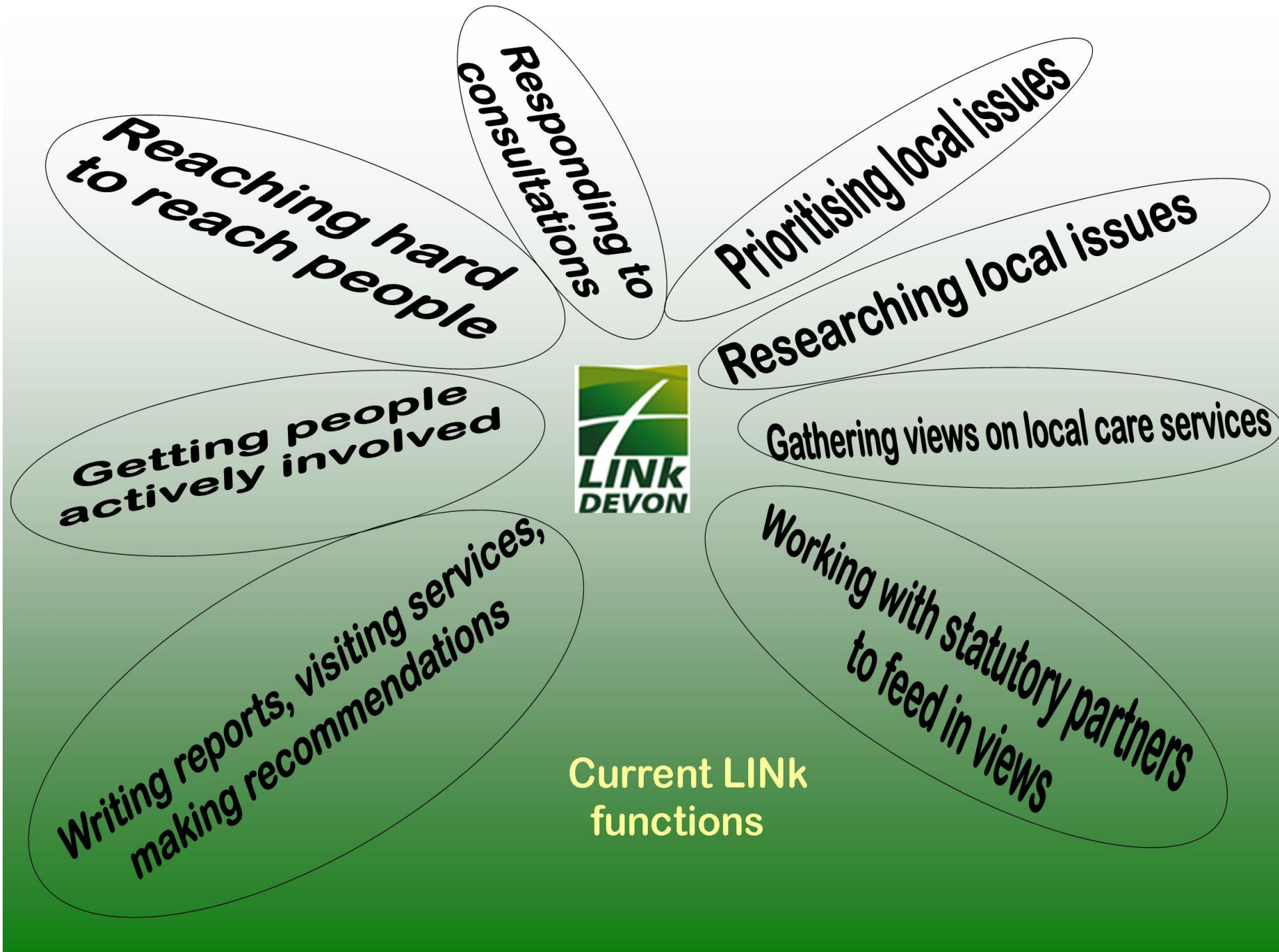


dacvs :: local focus :: county voice
strengthening local voluntary and community action in Devon



Local Involvement Networks – Local HealthWatch

- Angela Rose and Caroline Lee
Community Engagement in Devon



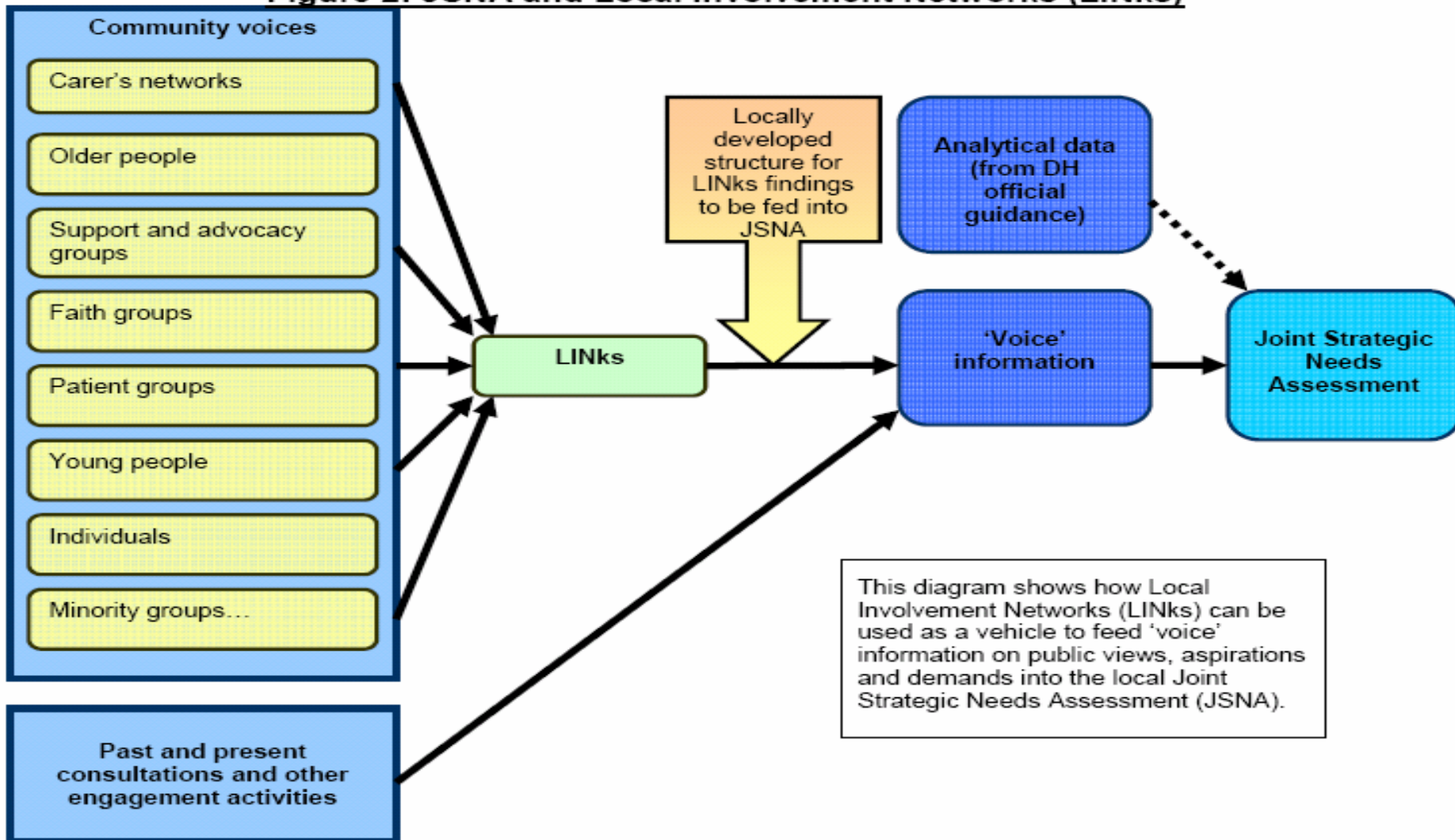
LINK make links with

- ✓ Community and voluntary sector (DACVS, Healthier and Stronger Communities Partnership)
- ✓ Participants in network (1000+ groups and individuals)
- ✓ DCC Provider Engagement Network
- ✓ Devon County Council, NHS Devon
- ✓ NHS Trusts, CQC, GOSW, SHA



LINks and JSNA

Figure 2: JSNA and Local Involvement Networks (LINKs)



Transition to HealthWatch

- ✓ Why this is happening . legislative process
- ✓ When this is happening
- ✓ How this is happening/what changes do we expect
- ✓ Who will it involve

The new Health and Social Care Bill

Key messages for patients and public:

- People: no decision about me without me+
- Public will have more say in how the NHS and Social Services are run
- Democratic independence of communities and individuals

When is it happening?

- ✓ Devon County Council has agreed the funding for year 4 to allow for LINKs transition from April 2011
- ✓ HealthWatch to go live+April 2012

HealthWatch Proposals

New additional roles may include

- “ Signposting to advocacy for individuals who are making complaints about healthcare
- “ Supporting people, particularly those who lack capacity to access services and make choices
- Representing local views on Health & Wellbeing Boards

HealthWatch proposals

- One stop shop for information about health and social care services
- Monitoring local Care Services
- Involvement with NHS Constitution and working more closely with CQC
- Working with GP consortia by adding local views to commissioning decisions

Voluntary Sector is vital!

- For HealthWatch to be a success, positive engagement with the voluntary sector for health and social care, and its beneficiaries, is essential
- Grassroots experience; case studies; evidence; community champions
- Use statutory powers to hold services and commissioners to account

Developing HealthWatch locally

- Partnership approach . continue and grow community engagement and involvement
- Local HealthWatch, Commissioners and Providers need to develop new relationships to enable people to freely comment on quality and standard of services

Key messages

- Tell us what will work for you in terms of involvement/engagement
- Community action and local leadership are essential for success
- Will build on LINks work in giving a stronger voice to voluntary sector

Join us!

- 01404 549045
linkdevon@edvsa.org.uk
www.linkdevon.org.uk
- Or find us on Facebook!

