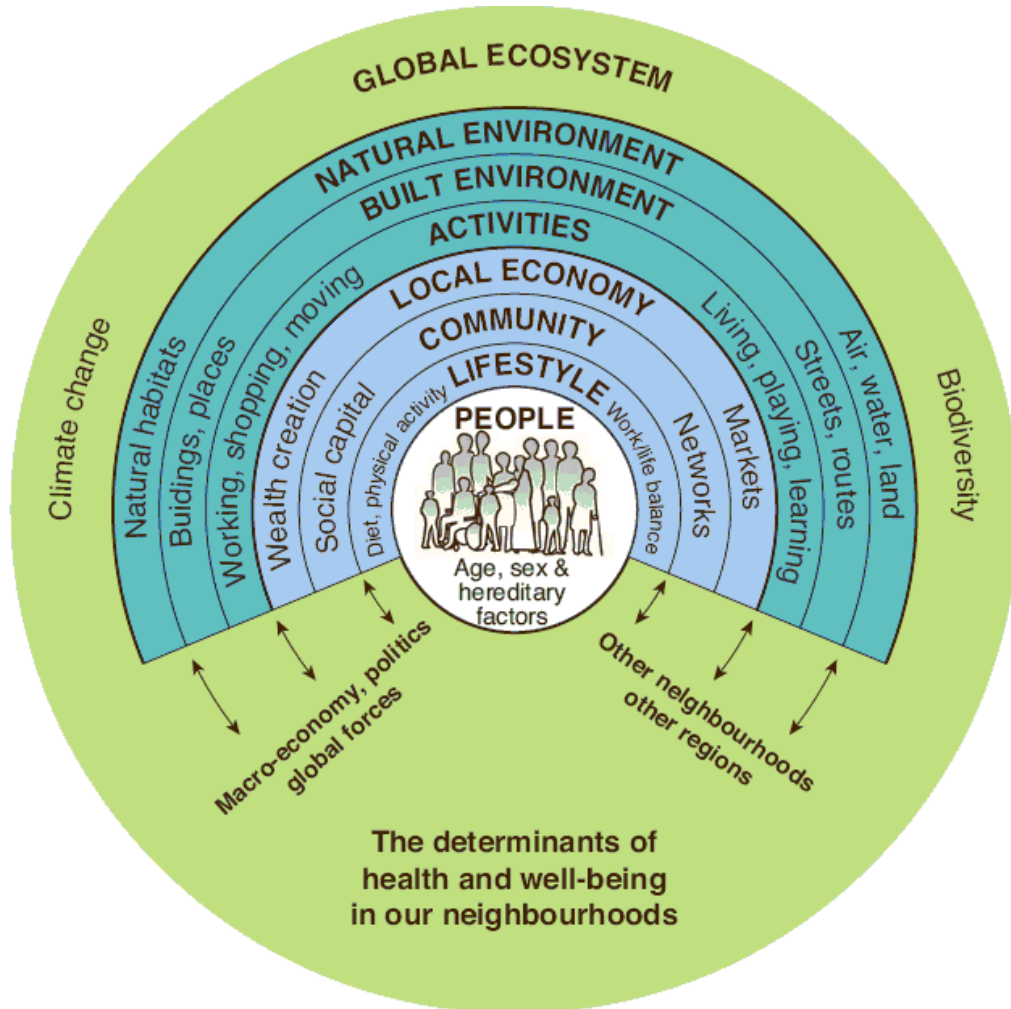


Devon Joint Strategic Needs Assessment

**Simon Chant, Head of Public
Health Intelligence, NHS Devon**

March 2011

Determinants of Health



I Definition

“Joint Strategic Needs Assessment describes a process that identifies current and future health and wellbeing needs in light of existing services, and informs future service planning taking into account evidence of effectiveness.”
(Department of Health, 2007)

What is JSNA in Devon?

Joint Strategic Needs Assessment (JSNA)

Information

Range of sources e.g.

- NHS
- Devon County Council
- District Councils
- Ambulance, Police, & Fire and Rescue
- Communities

Range of types

- Wider determinants e.g. housing. transport
- Lifestyle factors e.g. smoking, physical activity
- Illness
- People
- Places

Analysis

Joint Strategic Needs Assessment Steering Group
Co-ordinates the collection and analysis of information

Identifies how well interventions work and what the gaps are

Reports to the **Healthier and Stronger Communities Partnership**

Service Plans and Delivery

Planning Groups use the information to decide what services to buy

Information also tells the story of how many actions have been achieved

Next Steps:

- Strengthen user involvement
- Make it more easily available

Contents: Sections 2010/11

- Introduction and Overview
- Key Recommendations for Commissioners
- Health and Wellbeing Indicators
- An Overview of Devon
- Health and Wellbeing Topic Pages
- Health Profiles (Town, Locality, Consortium)
- Health and Wellbeing Library

Topics: Topic Page Structure

- Topic
- Lead Officer
- Population needs
- Degree of risk
- What works
- What is currently being done
- Commissioning recommendations
- Further information

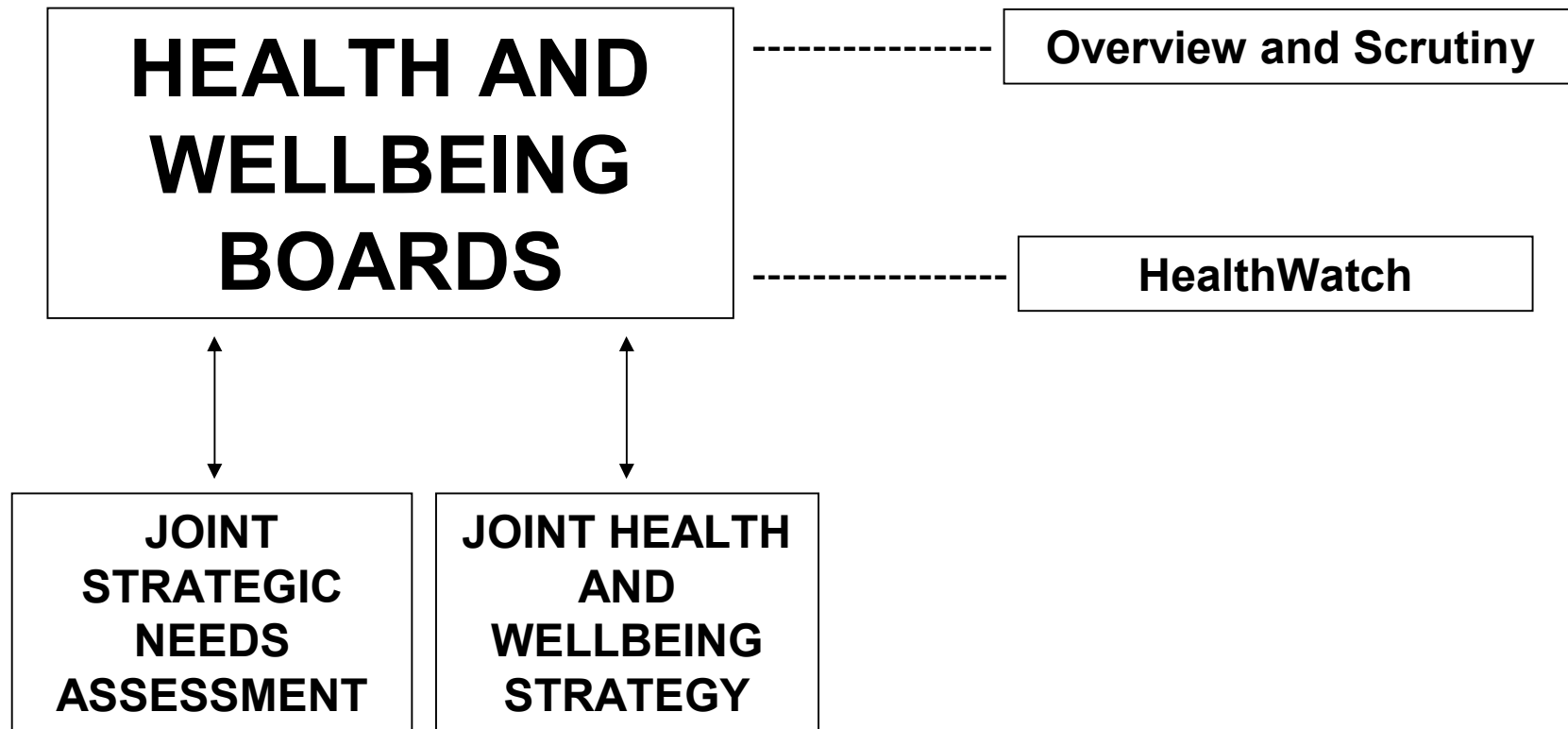
in the 2010 White Paper

- An objective analysis of local current and future needs for adults and children, assembling a wide range of qualitative and quantitative data, including user views
- Local authorities and GP consortia will have an equal and explicit obligation to prepare the JSNA through the Health and Wellbeing Board
- All commissioning will be driven by the JSNA or shared assessments across local authority boundaries with a new legal obligation on NHS and local authority commissioners to have regard to the JSNA

in the 2010 White Paper

- Health and Wellbeing Boards will have to develop a high-level Joint Health and Wellbeing Strategy spanning NHS, social care and public health and can also consider wider determinants of health
- provide a concise summary of how organisations will address the health and wellbeing needs of a community and help reduce inequalities
- new statutory duty on GP consortia and local authorities to produce the Joint Health and Wellbeing Strategy

in the 2010 White Paper



How do you contribute?

- Data and information about user needs and your services
- Your understanding of complex needs and engagement with marginalised groups
- Your knowledge of local services including gaps and unmet needs
- Evidence of cost effective interventions and advise on issues of quality and innovation
- Person centred approach

How do you contribute?

- At events like this
- Email d-pc.devonjsna@nhs.net
- Through Health and Wellbeing partnerships
- Through your own networks
- By contributing directly to the health and wellbeing library and topic pages

tertiary sector resources

- VODG website . JSNA why should I get involved? <http://www.vodg.org.uk/JSNA-Resources.html> (best practice guide due Thursday 24 March)
- Healthy Communities CoP and Knowledge website www.idea.gov.uk/health

Contacts

- Ian Tearle, Head of Health Policy, NHS Devon
- Simon Chant, Head of Public Health Intelligence, NHS Devon
- Gemma Hobson, Project Manager, Devon County Council

Web (current): www.devon.gov.uk/jsna

Email: d-pc.devonjsna@nhs.net

Dedicated website to follow

Devon Joint Strategic Needs Assessment

**Simon Chant, Health of Public
Health Intelligence, NHS Devon**

March 2011